

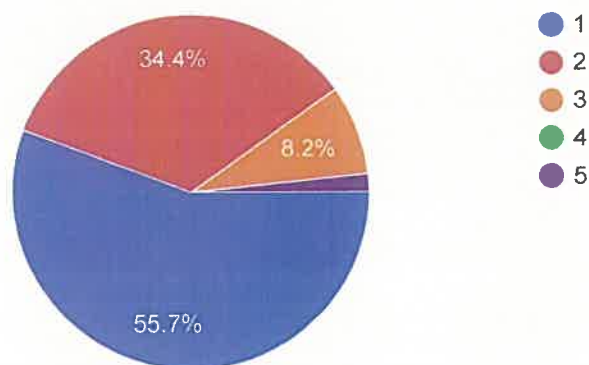
62 responses

Mumbulla School Parent Survey 2018

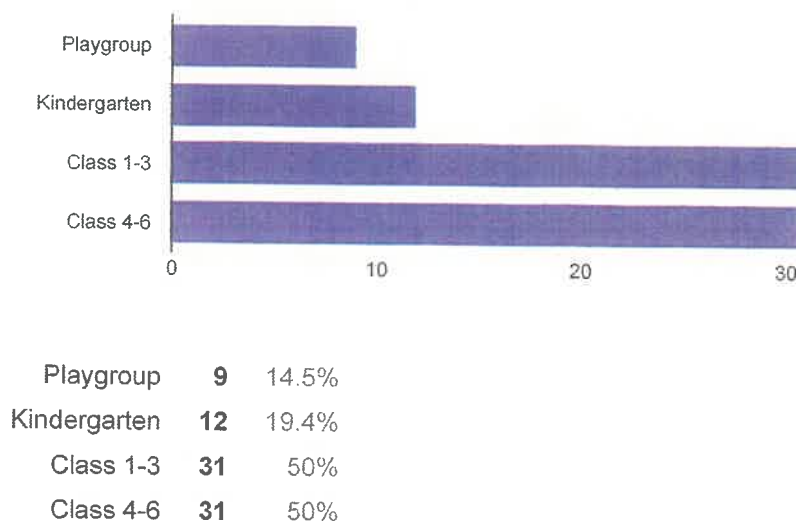
62 responses

How many children do you currently have at Mumbulla School?

61 responses

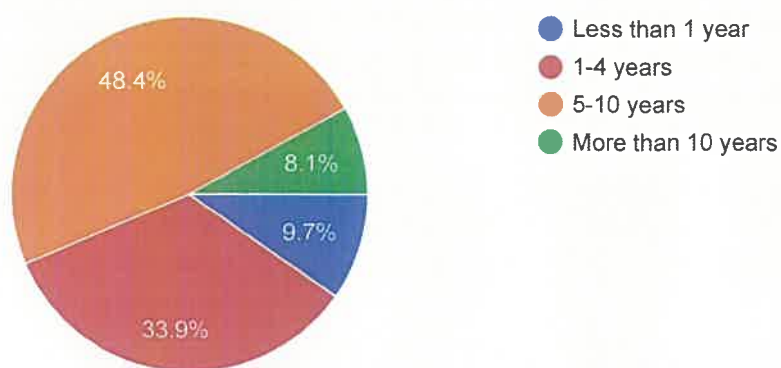


My child/ren are currently in:



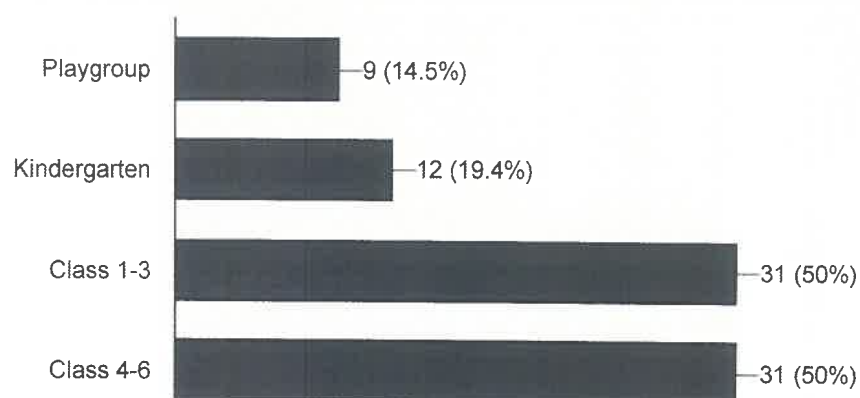
How many years have you been at the school?

62 responses

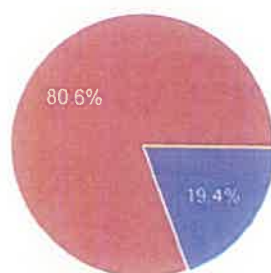


My child/ren are currently in:

62 responses



Are you:

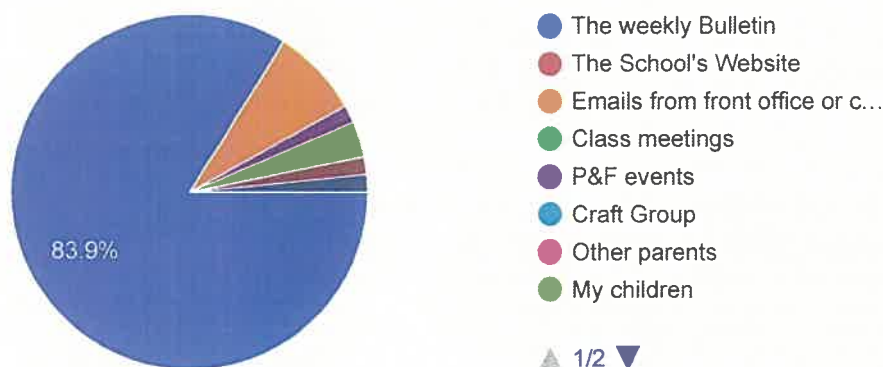


Male	12	19.4%
Female	50	80.6%
Other	0	0%

Information Sources

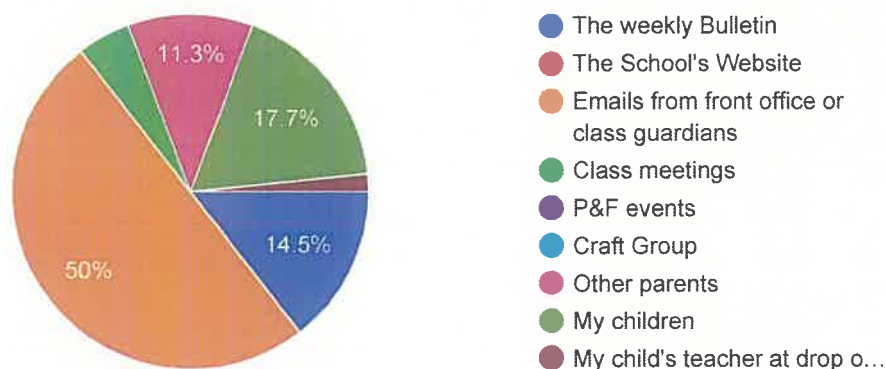
My primary information source about what is happening at school is:

62 responses



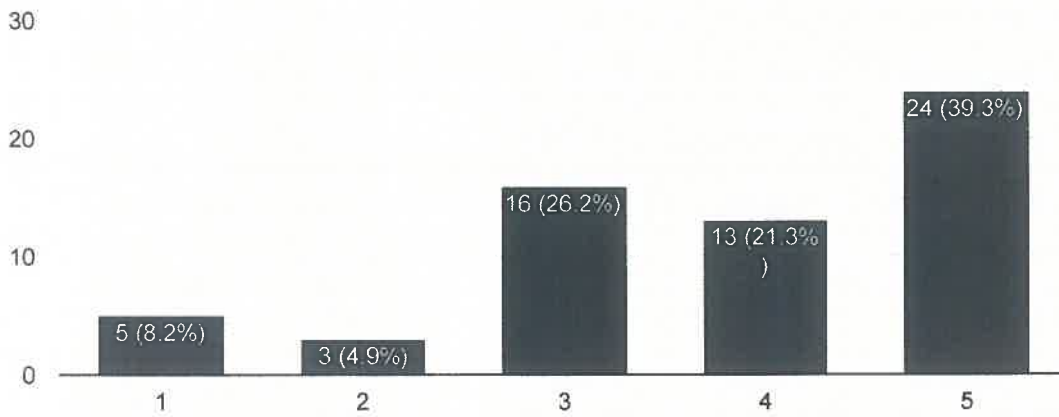
My secondary information source is:

62 responses



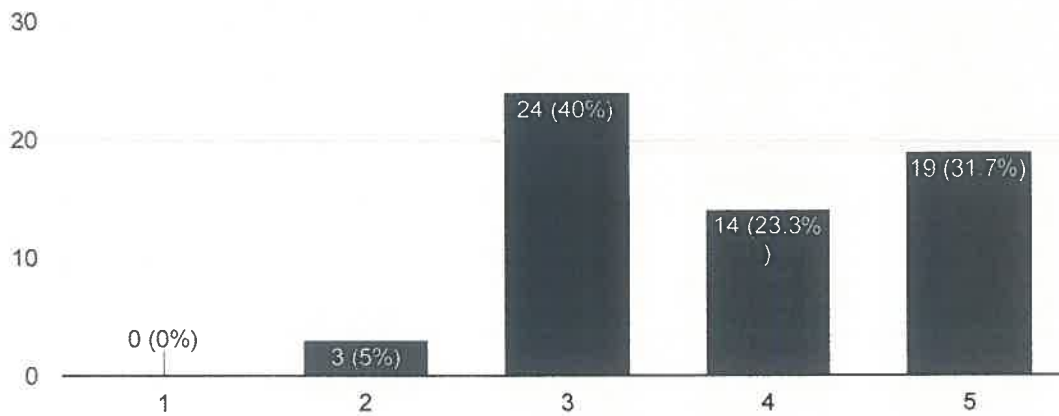
I know where to find the school's policies and procedures.

61 responses



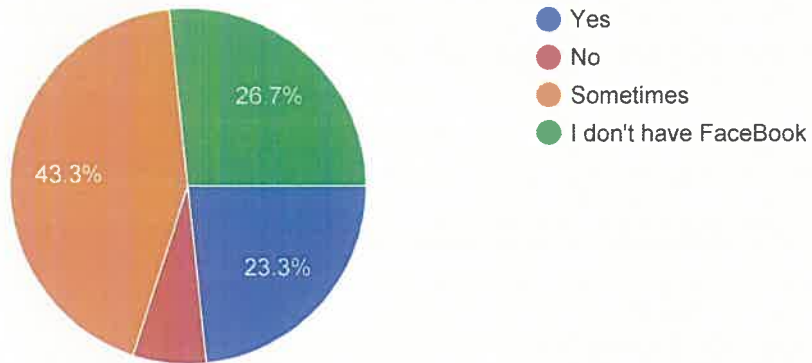
The school's website is useful and informative.

60 responses



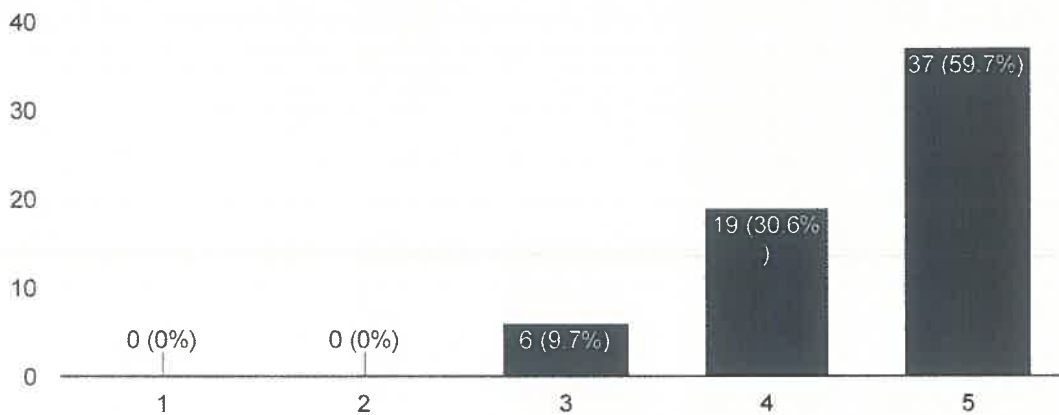
The school's Facebook page is useful and informative.

60 responses



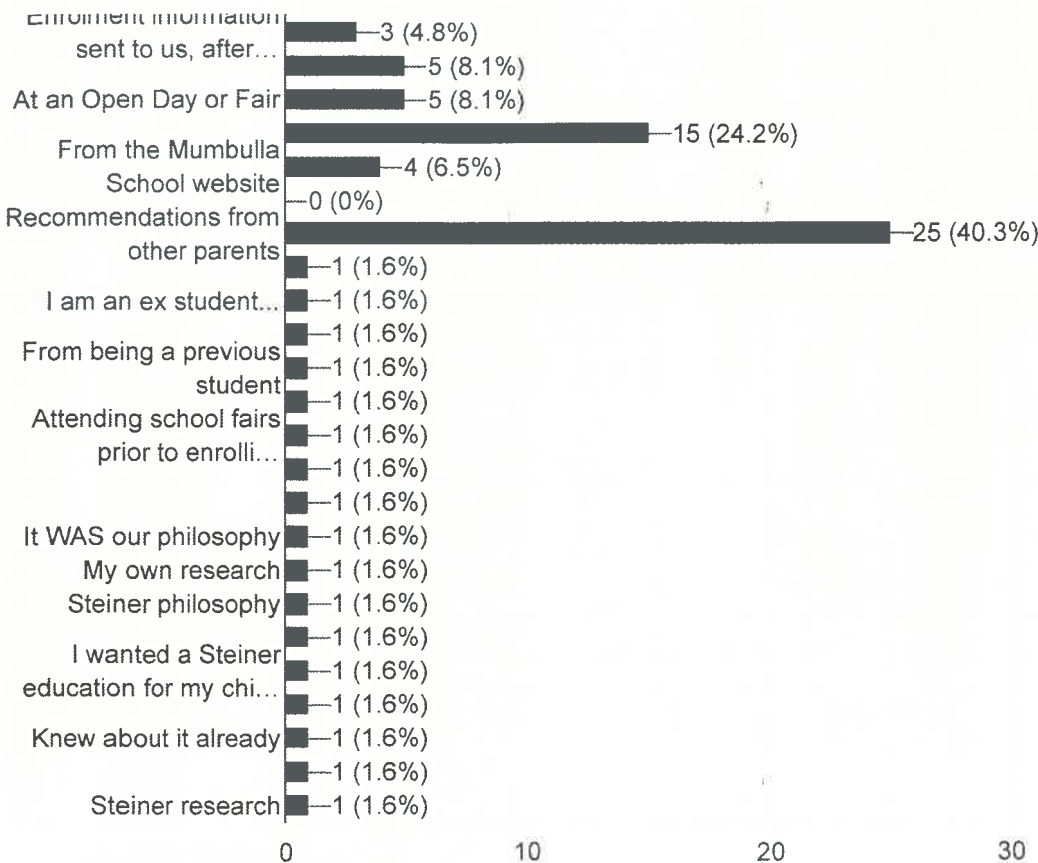
The school Bulletin provides clear and timely information on issues affecting the school community.

62 responses



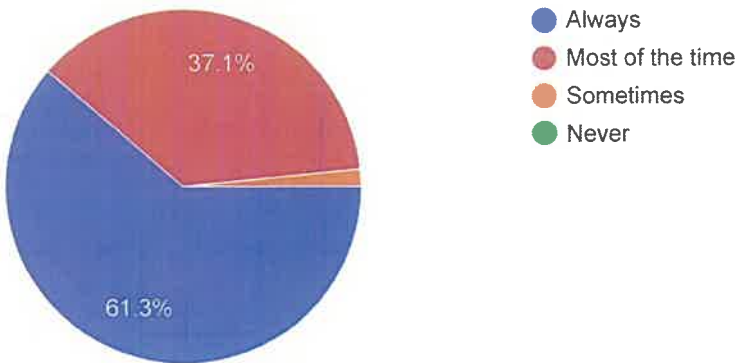
Where did you get the information that convinced you that Mumbulla School would be the right choice for you?

62 responses



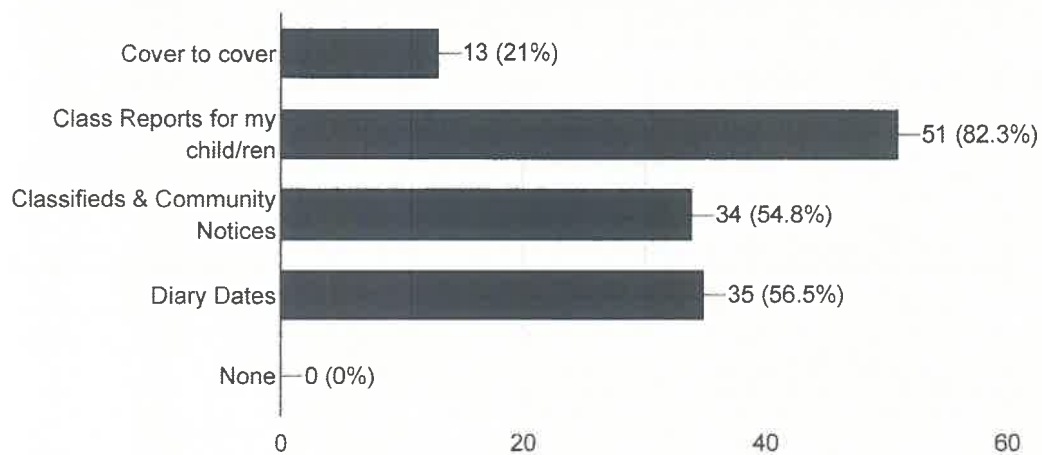
Do you read the school Bulletin every week?

62 responses



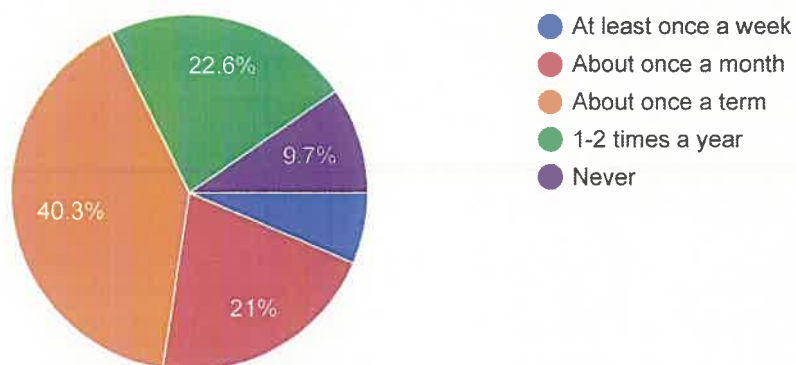
Which parts of the Bulletin do you read?

62 responses



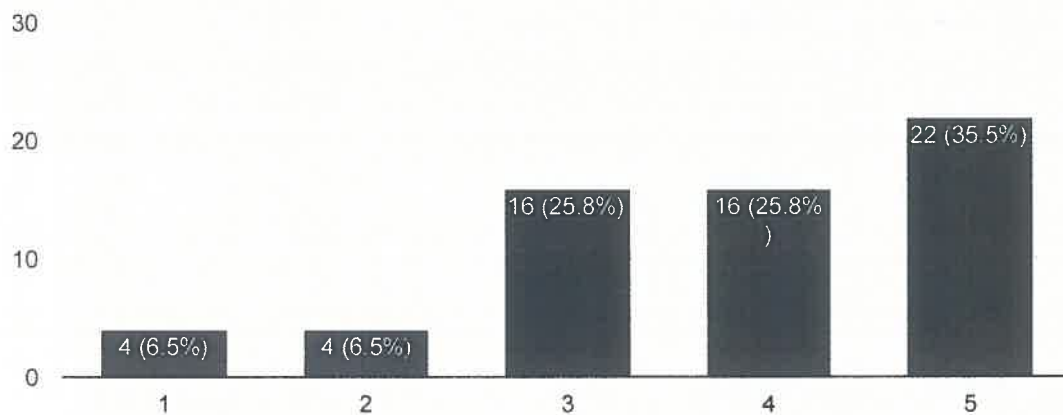
How often in the last year have you made contact with the school to discuss the needs of your child?

62 responses



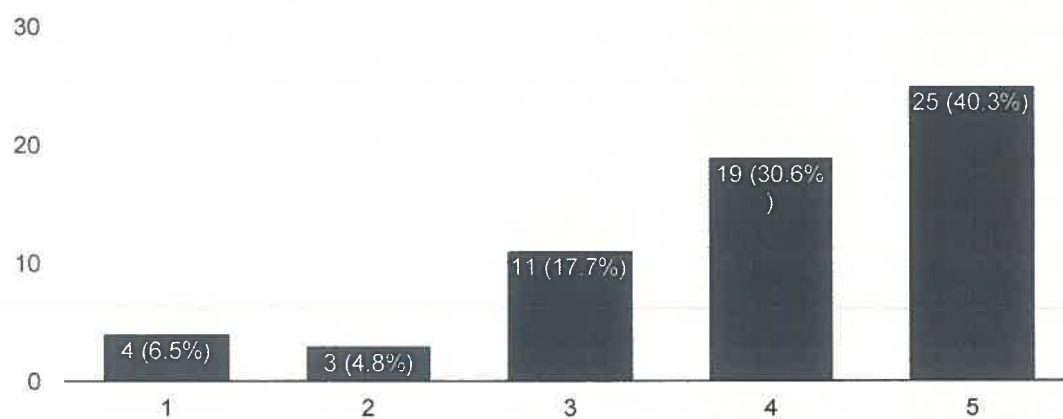
I am clear about what the P&F does in the school.

62 responses



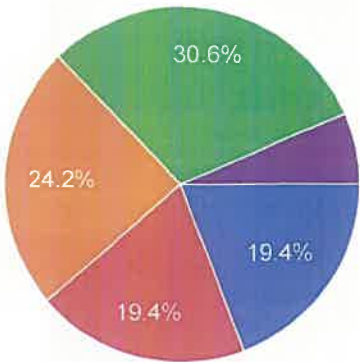
I know how to get involved in the P&F.

62 responses



How often in the last year have you volunteered your time to the school?

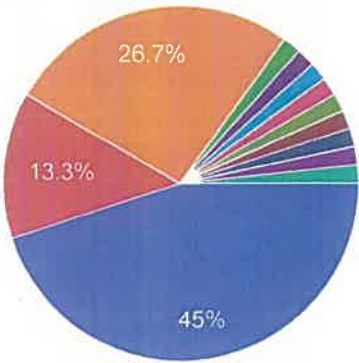
62 responses



- At least once a week
- About once a month
- About once a term
- 1-2 times a year
- Never

How would you describe your level of participation in the school?

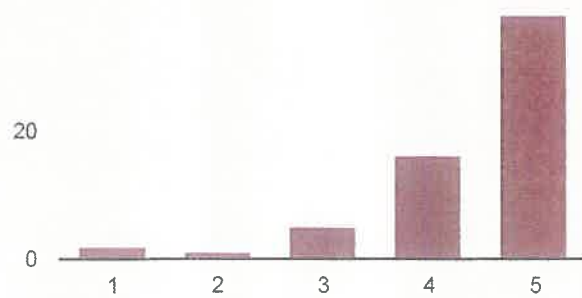
60 responses



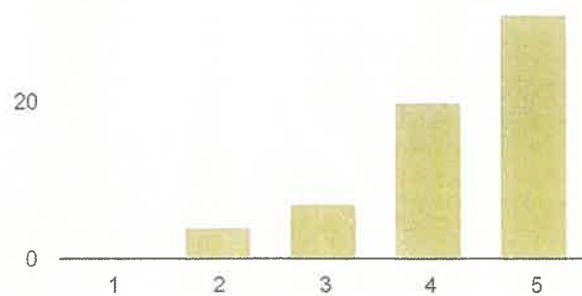
- Currently contributing at full...
- Would like to assist more b...
- Currently have no time to h...
- Don't have much time, but...
- help when can but have 4 c...
- I do as much as I can withi...
- I don't feel I do much for th...
- I do not feel welcome at th...

School Culture & Communication

I feel welcome at the school.

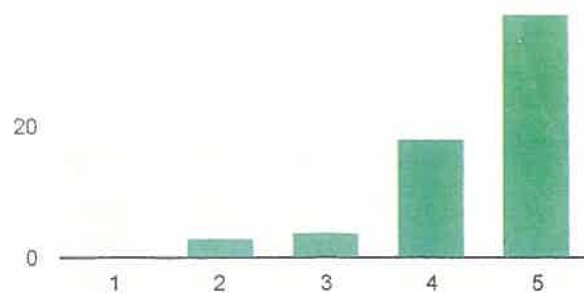


I am satisfied with the way the school communicates with me.



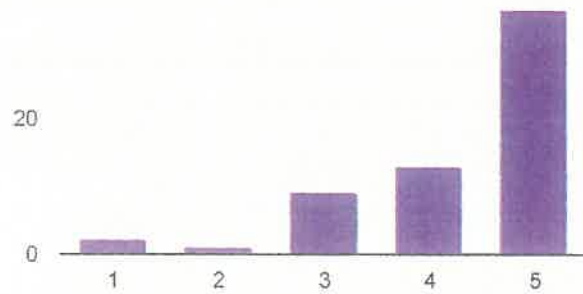
Strongly disagree: 1	0	0%
2	4	6.5%
3	7	11.3%
4	20	32.3%
Strongly agree: 5	31	50%

I know where to go and who to speak to when asking a question, raising a concern or providing feedback.



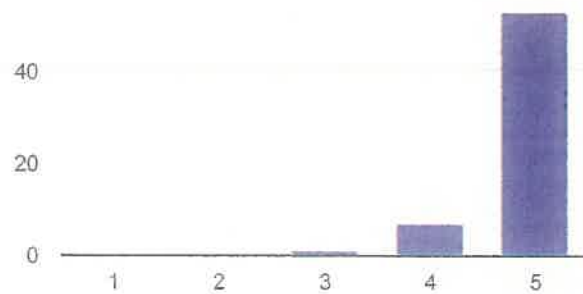
Strongly disagree: 1	0	0%
2	3	4.8%
3	4	6.5%
4	18	29%
Strongly agree: 5	37	59.7%

I receive timely and adequate feedback to issues or concerns I raise with the school.



Strongly disagree: 1	2	3.3%
2	1	1.6%
3	9	14.8%
4	13	21.3%
Strongly agree: 5	36	59%

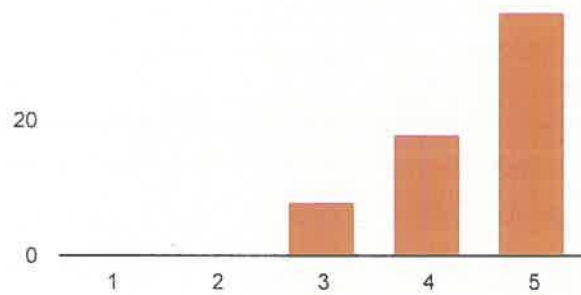
The office staff take care of my needs in a timely manner.



Strongly disagree: 1	0	0%
2	0	0%
3	1	1.6%

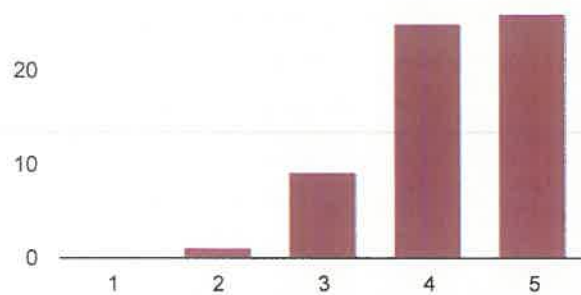
Teacher/Parent Communication

My child's teacher communicates openly and in a timely manner with me.



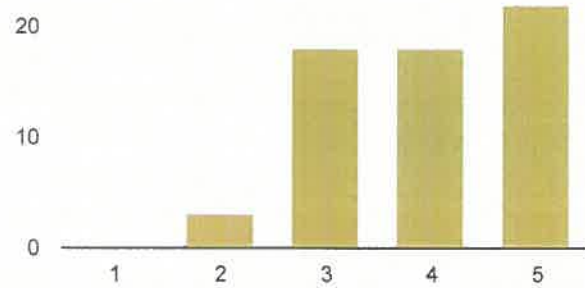
Strongly disagree: 1	0	0%
2	0	0%
3	8	12.9%
4	18	29%
Strongly agree: 5	36	58.1%

I feel informed about my child's development and wellbeing.



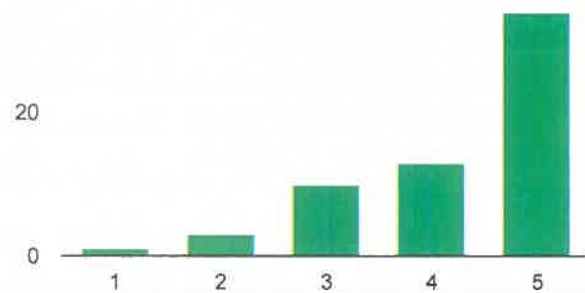
Strongly disagree: 1	0	0%
2	1	1.6%
3	9	14.8%
4	25	41%
Strongly agree: 5	26	42.6%

I feel informed about the content and curriculum in the classroom.



Strongly disagree: 1	0	0%
2	3	4.9%
3	18	29.5%
4	18	29.5%
Strongly agree: 5	22	36.1%

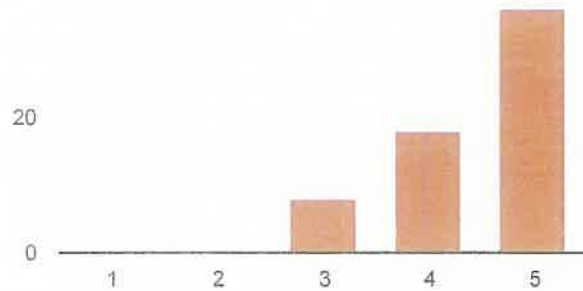
Class meetings are valuable.



Strongly disagree: 1	1	1.6%
2	3	4.9%
3	10	16.4%
4	13	21.3%
Strongly agree: 5	34	55.7%

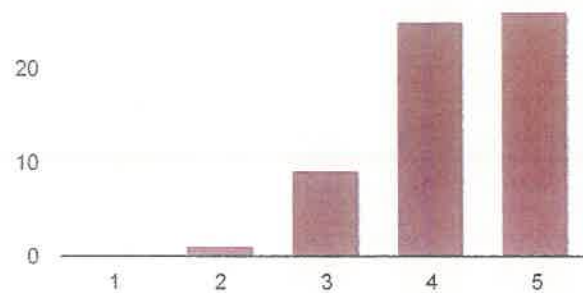
Teacher/Parent Communication

My child's teacher communicates openly and in a timely manner with me.



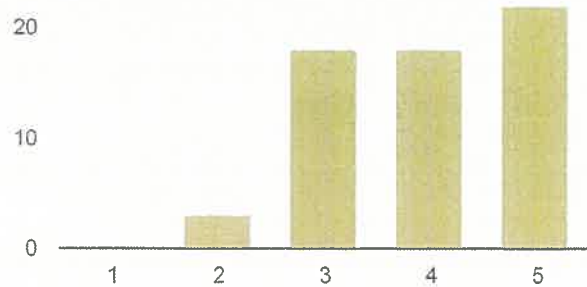
Strongly disagree: 1	0	0%
2	0	0%
3	8	12.9%
4	18	29%
Strongly agree: 5	36	58.1%

I feel informed about my child's development and wellbeing.



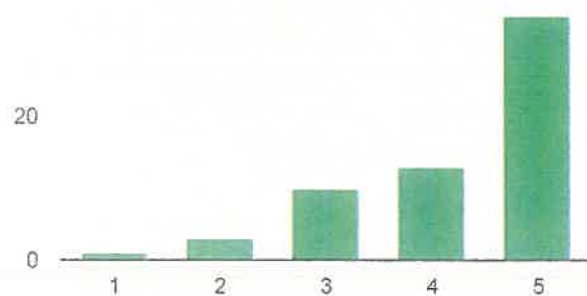
Strongly disagree: 1	0	0%
2	1	1.6%
3	9	14.8%
4	25	41%
Strongly agree: 5	26	42.6%

I feel informed about the content and curriculum in the classroom.



Strongly disagree: 1	0	0%
2	3	4.9%
3	18	29.5%
4	18	29.5%
Strongly agree: 5	22	36.1%

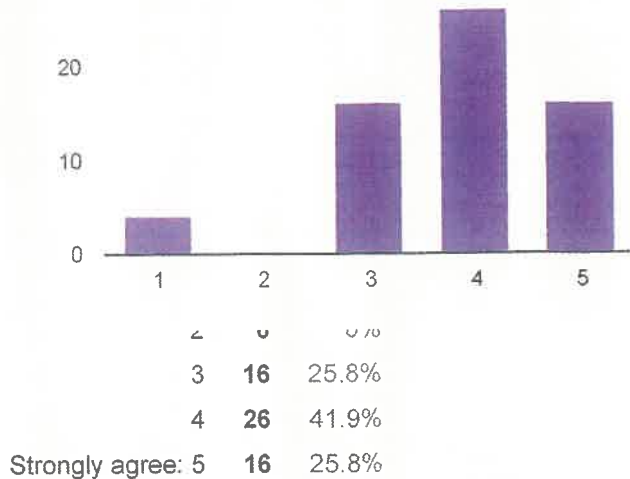
Class meetings are valuable.



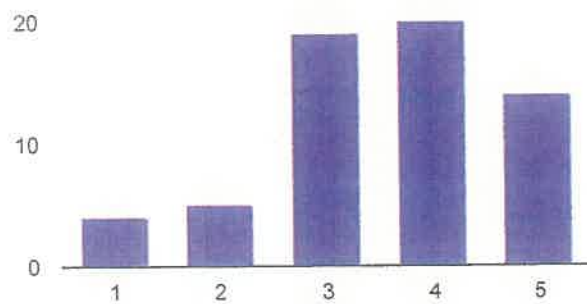
Strongly disagree: 1	1	1.6%
2	3	4.9%
3	10	16.4%
4	13	21.3%
Strongly agree: 5	34	55.7%

Leadership and Direction

I feel well informed about the organisational structures at school (eg. Management, College of Teachers, Board)

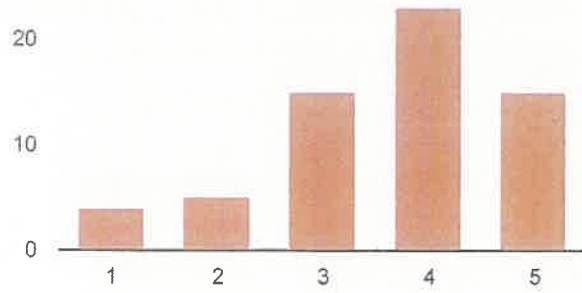


I feel well informed about what the College of Teachers is doing and decisions it makes.



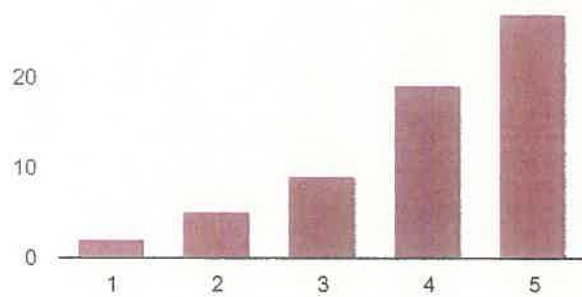
Strongly disagree: 1	4	6.5%
2	5	8.1%
3	19	30.6%
4	20	32.3%
Strongly agree: 5	14	22.6%

I feel well informed about what the Board is doing and decisions it makes.



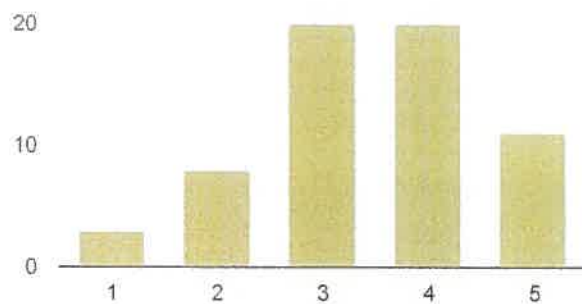
Strongly agree: 5 **15** 24.2%

I know or know how to find out who is on the Board.

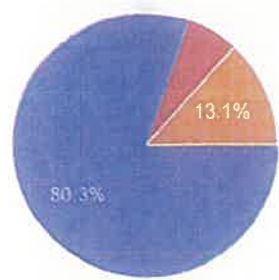


Strongly disagree: 1 **2** 3.2%
 2 **5** 8.1%
 3 **9** 14.5%
 4 **19** 30.6%
Strongly agree: 5 **27** 43.5%

I feel well informed about the school's vision and future direction.



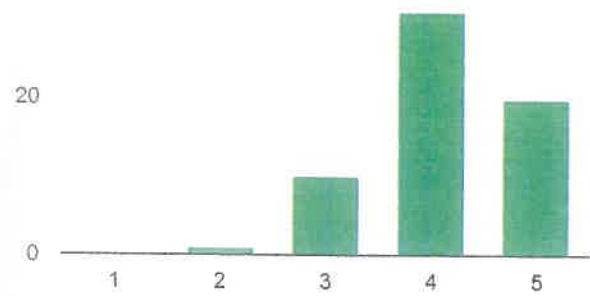
Would you enrol your child in Years 7-8 if they were offered at Mumbulla School in the future?



Yes	49	80.3%
No	4	6.6%
Other	8	13.1%

Parent Education

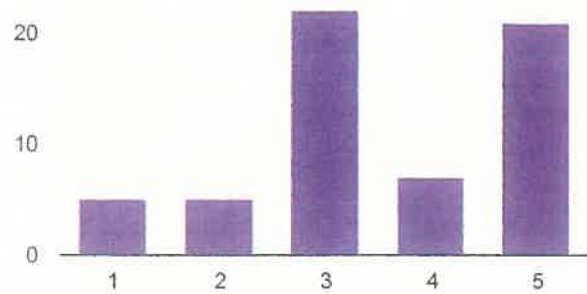
I already understand the basic principles of Steiner Education.



Strongly disagree: 1	0	0%
2	1	1.6%

	3	10	16.1%
	4	31	50%
Strongly agree: 5	20	32.3%	

I would like to know more about Steiner Education.



Strongly disagree: 1	5	8.3%
2	5	8.3%
3	22	36.7%
4	7	11.7%
Strongly agree: 5	21	35%

I'm interested in the school providing parent education on other topics.



Yes	43	70.5%
No	18	29.5%

General Comments

I would recommend Mumbulla School to others.

